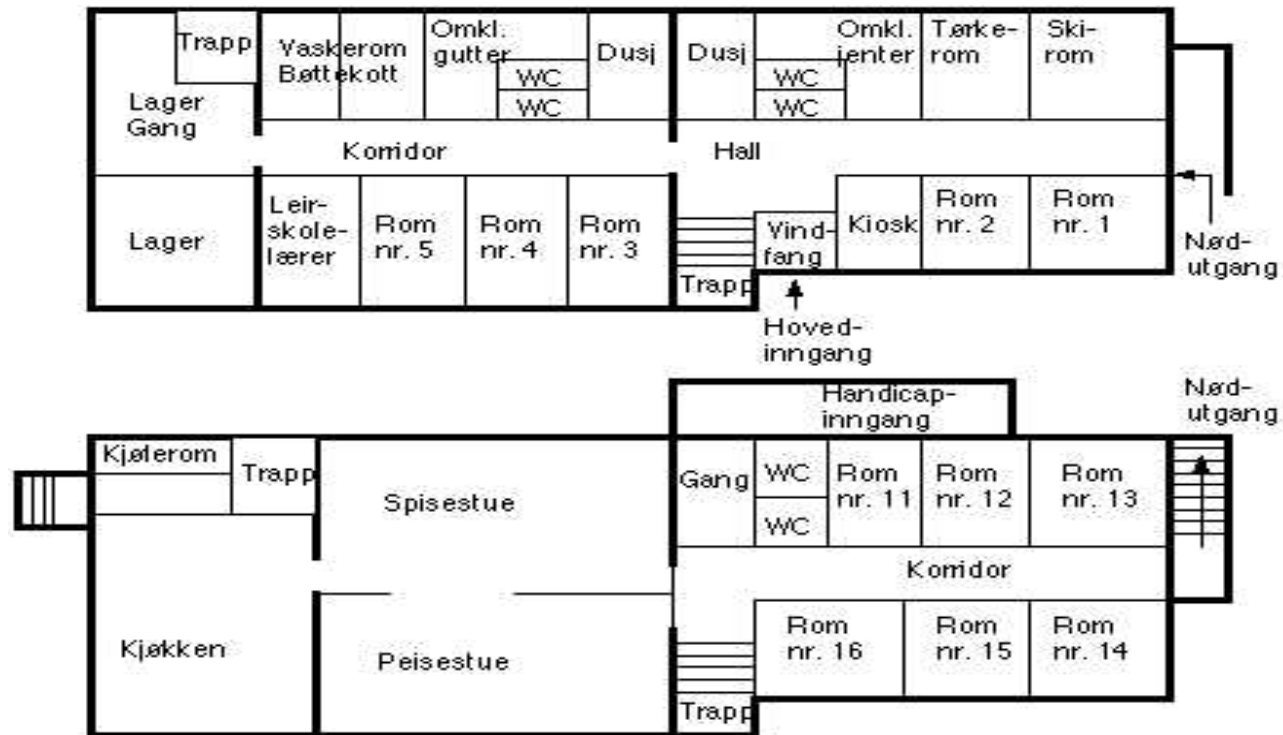


ROMPLAN



Rom 1 (sokkel): 4 senger

Rom 2 (sokkel): 4 senger

Rom 3 (sokkel): 4 senger

Rom 4 (sokkel): 4 senger

Rom 5 (sokkel): 2 senger

Rom 11 (1.etasje): 1 seng

Rom 12 (1. etasje): 4 senger

Rom 13 (1. etasje): 4 senger

Rom 14 (1. etasje): 4 senger

Rom 15 (1. etasje): 4 senger

Rom 16 (1. etasje): 4 senger